

# Inspiring National Level Practices Through Provincial Level Best Practices

A case study on the blended learning experience of  
the Sabaragamuwa province



Shantha Kulathunge  
Coalition for Educational Development - CED Sri Lanka



**This presentation is based on the findings of the study on  
"Impact of COVID- 19 on Education - Remedial and Response Mechanisms"**

**conducted by**

**Coalition for Educational Development (CED Sri Lanka)**

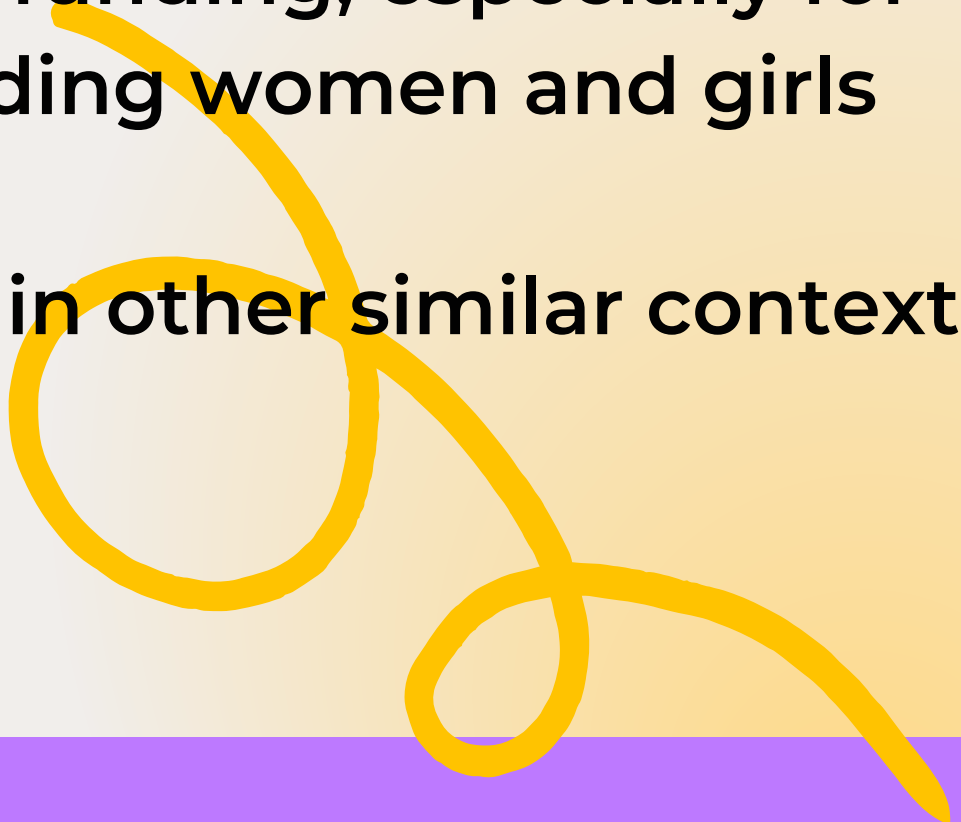




## IMPACT OF COVID-19 ON EDUCATION

- The COVID-19 pandemic can be named as the major catastrophe in this century
- Government of Sri Lanka has taken different measures to prevent it spreading
- Spreading the pandemic has been controlled
- However these measures also led to a number of consequences impacting negatively on personal, community, and the national level

# OBJECTIVES OF THE STUDY

- Identify the impact of the COVID-19 pandemic on education financing in Sri Lanka.
  - Categorize key education components and/or sectors and vulnerable groups highly affected by the pandemic; analyze the financing implications and identify the programs or services response/mitigation intervention.
  - Recognize the good practices utilized to ensure adequate funding, especially for vulnerable learners, most affected by the pandemic, including women and girls
  - Compile actionable recommendations that could be used in other similar context
- 
- A decorative yellow swirl graphic is located in the bottom right corner of the slide, overlapping the text of the last bullet point.

# THEMATIC AREAS – CONSIDERED

**Virtual and blended learning modalities/Distance learning/CT in Education (challenges and good practices of schools/communities)**

---

**Mental stress/psycho-social impact of COVID-19, coping and support for students, parents, and teachers**

---

**Government aid, such as food rations, cash transfers, etc.**





# The main research questions

(for education and other thematic areas)

- Do these mechanisms introduced by the authorities reach the targeted communities?
- Does the target communities benefit from these schemes?
- Do they have a monitoring mechanism to evaluate the progress and rectify the issue?

# Sampling

## National Level

- Ministry of Education
- NIE
- Ministry of Finance

## Provincial Level

- Sabaragamuwa

## District Level

- Polonnaruwa, Puttlam, Kegalle, Kilinichchi

## Local Level –

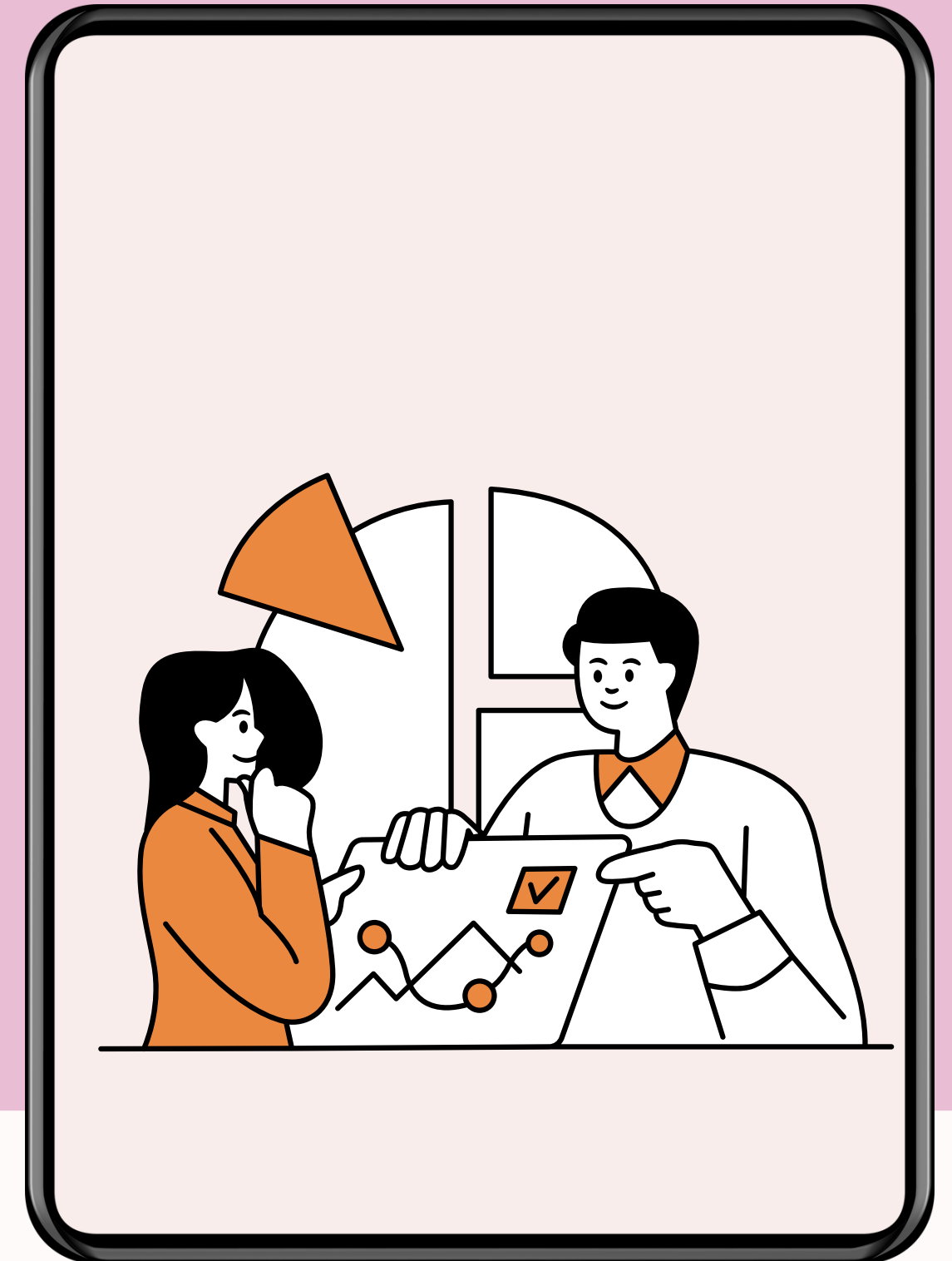
- Villages



# Sectorial Analysis

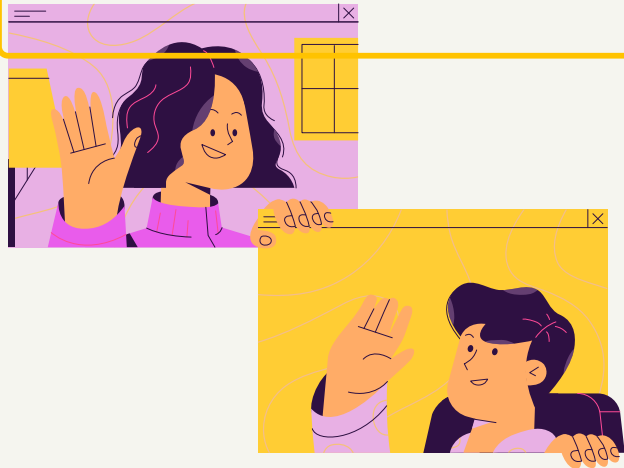
## Education sector

- Main Stake holders, MOE PMOE Zonal School Level
- Programmes – Alternative/blended learning
- Gurugeadara TV / Channel NIE /E-thaksalawa
- Provincial Level – E-nanapiyasa
- On line education initiatives Initiated by schools/  
individuals teachers

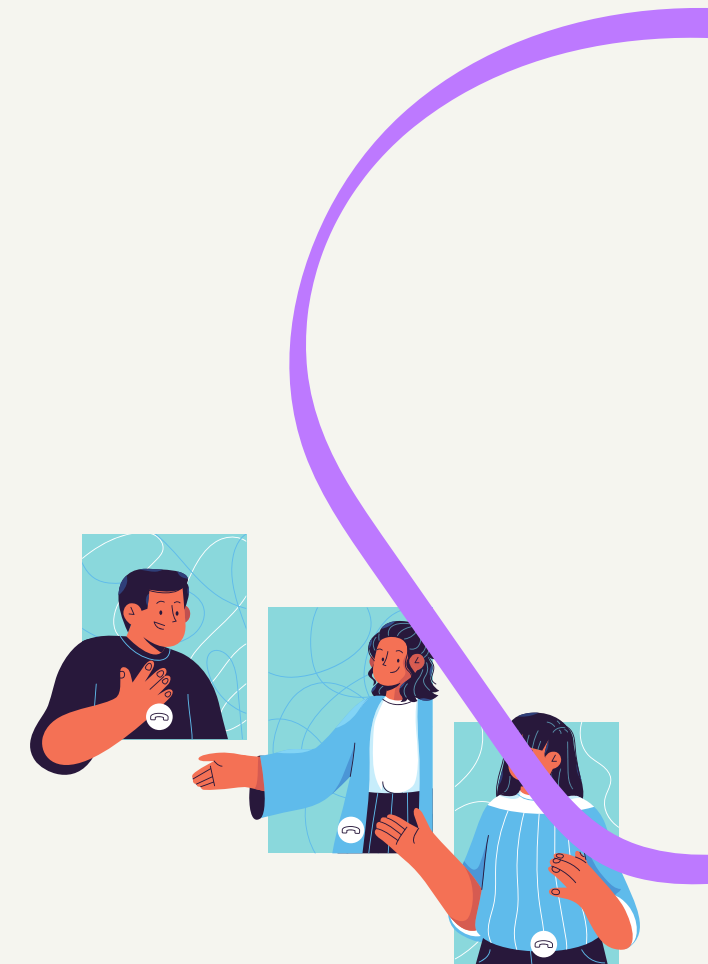




# Findings of the in-depth analysis on E-nanapiyasa



- Enhancing blended learning to face the pandemic situation
- Improve digital literacy
- Interactive learning environment
- Home based learning – sending education resources
- Orientation to online examinations (Grade 5 Scholarship)
- Child friendly interface
- Teacher training
- Self Learning
- Resource sharing



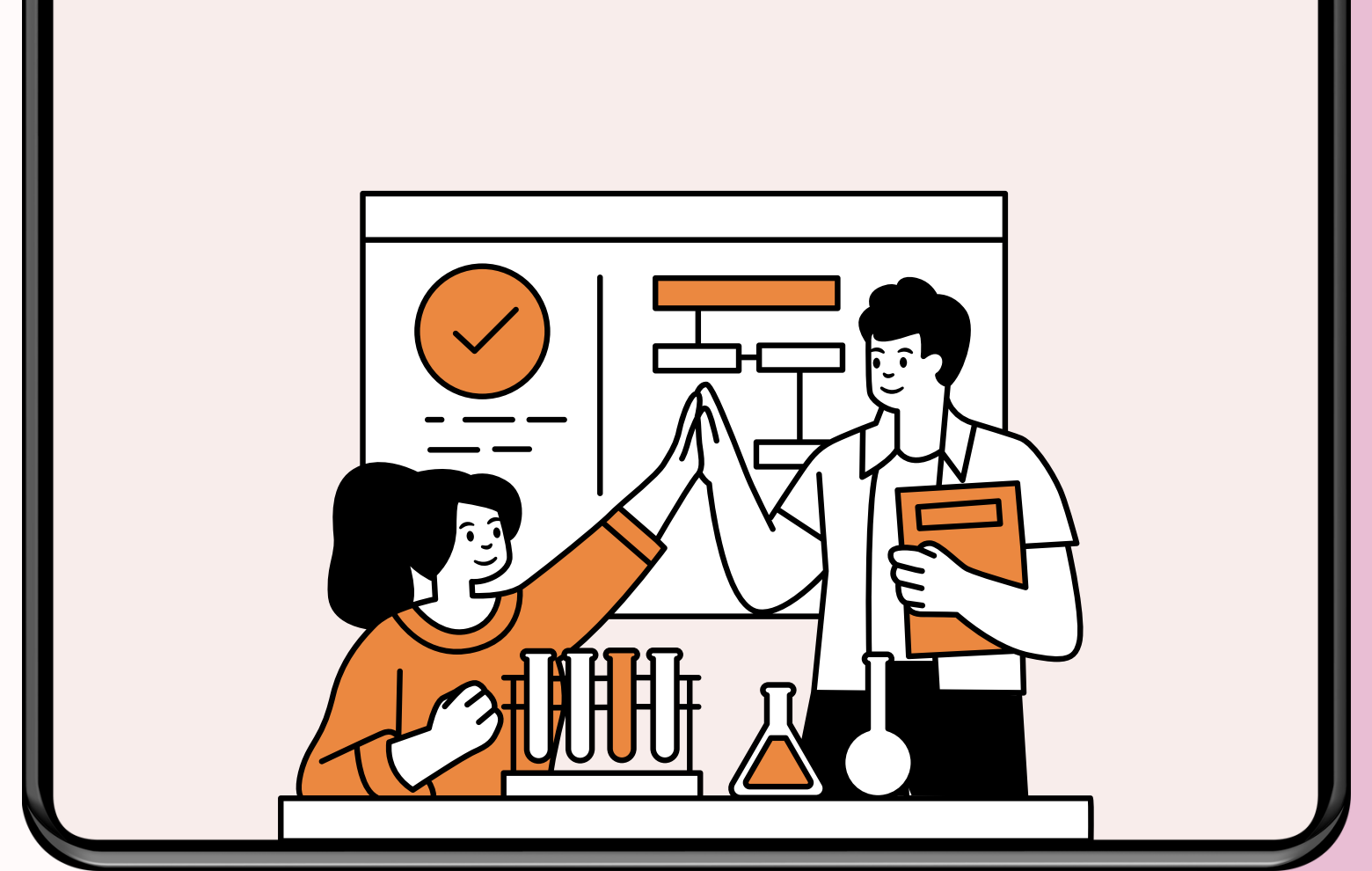


# Online Education Inspired through E-Nanapiyasa

- Planning and developing strategies to face the new challenges
- Increased attention on Interactive and user-friendly
- Provide multiple learning environments to both teachers and students
- Assessing context and designing suitable approaches
- Maximizing local knowledge and utilizing resources
- Training for teacher on online education techniques
- Parent meeting
- Extra-Curricular activities - Refresh tiredness and mental stress

# Challenges

- Traditional learning/Education system
- Lack of infrastructure and devices financial constrains
- Lack of training/experience both Students/teachers
- Digital Literacy
- The Ministry of Education has developed a special teacher guide on Distance learning teaching methods in Local languages both in Sinhala and Tamil.



# Recommendations

## Education sector

### Developing national strategy to blended learning system

In the given context it is important to develop a national level strategic plan for a blended learning system. In this procedure attention should be paid to map the existing physical and human resources at the national provincial and community level.

### Teacher training

Online education is all about SMART content. Students need to be able to grasp the key concepts without being overwhelmed with content. Teaching online requires specialized skills

### Continue blended learning even schools reopen

The periodic interruptions to school reopening attempts underscore the need for a well-developed hybrid system for education delivery

# Recommendations

## Education sector

### Updating the learning process

Digital literacy and English language skills are other factors that need to be considered for this educational change in Sri Lanka

### Developing the capacity and emphasizing the responsibility of parents

Online learning has also resulted in parents having to play a larger role in the 'learning process' especially at a primary and secondary education level'

### Promoting digital literacy

The Computer Literacy Statistics (2019) released by the Census and Statistics Department showed that Computer literacy among males (32.9%) was higher than that of females (28.9%) in 2019.

### Avoided replication

It was observed that schools as well as teachers are making an effort to develop capacity on distance education systems

# Recommendations

## Education sector

### Government needs to ensure the equity in education

The disparities in resource allocation are evident in the education system of Sri Lanka the government needs to ensure the availability of basic infrastructure and other resources in public schools.

### Providing data allowance for students

Although there are data free that is dedicated for online learning, platforms such as, "e-thaksalawa", "e-nanapiyasa" contain limitations

### Re-imagining the future

With the emergence of new digital technology, Sri Lanka has an opportunity to shift gears from a traditional manufacturing-led growth model and capitalize on the potential of its services sector. Therefore, the government should invest in research and studies to identify the potential advantages and align the education system to cater to the demands of new normal.

# Thank You

